

1 Preliminary Note

These Operating Instructions are to be read and observed carefully before the Single Plane Connectors are put to use! It contains important information with regards to the safe use and maintenance!

Single Plane Connectors are intended to connect single chain legs of mining conveyor chains at their end links.

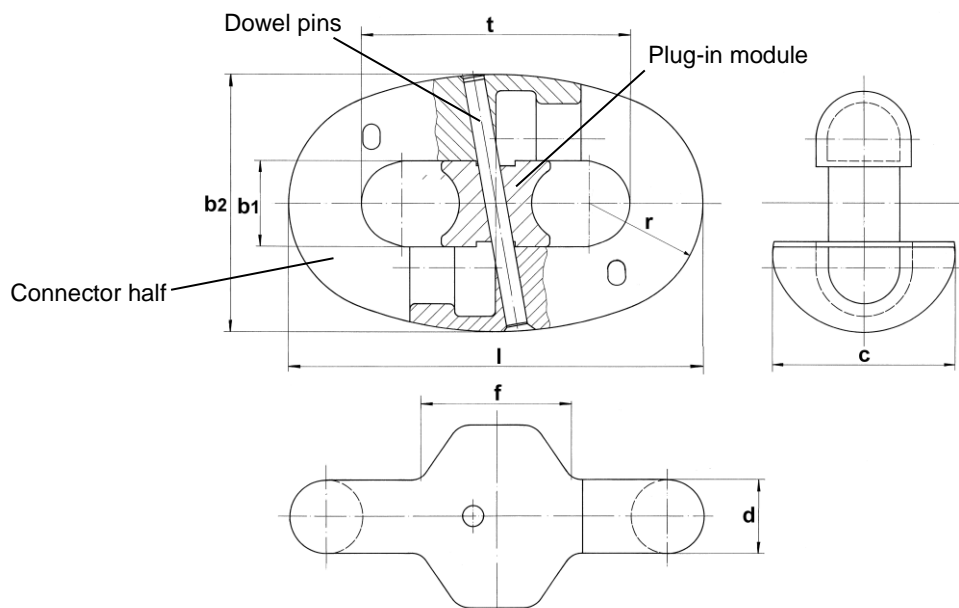
The connectors consist of two symmetrical forged halves which are locked against unintended opening by a plug-in module. The plug-in module is secured by two dowel pins assembled into each other.

The halves are manufactured as a tuned couple and should be used together. For a simple identification each pair is marked by a number.

Single Plane Connectors must drive in a horizontal orientation around chain wheels.

The dowel pins must only be used once.

2 Technical Data



Connector Size d x t [mm]	Article No.	Dimensions						Work Force max. [kN]	Breaking Force min. [kN]	Weight [kg]
		b ₁ min. [mm]	b ₂ max. [mm]	c [mm]	f max. [mm]	l max. [mm]	r [mm]			
22 x 86	F26100	24	84	55	53	132	34	380	608	1,5
26 x 92	F26130	28	96	65	62	146	40	531	850	2,8
30 x 108	F26140	32	109	75	72	170	46	707	1130	3,5
34 x 126	F26150	37	122	85	82	196	52	907	1450	5,6
38 x 126	F26163	45	134	95	75	204	58	1130	1820	6,9
38 x 137	F26160	40	134	95	92	215	58	1130	1820	7,3
38 x 146	F26165	40	134	95	80	226	58	1130	1820	7,3

The mechanical properties are at least the equivalent of DIN 22258 Part 2.

 THIELE	Single Plane (SP) Connectors TWN 0141	Operating Instructions	
		Article No.	B10134
Name	Norpoth	Change Index	A
		Page 2 of 3	EN-090816

3 Assembly

3.1 Preparations

- Check the Single Plane Connector for completeness and identical marking.
- Check the chain wheels are able to meet the thicker connector legs.
- Shut down the conveyor and take appropriate measures to rule out it can start inadvertently.
- If necessary remove the plug-in module and open the halves of the new connector.

3.2 Assembly

- Position the two connector halves and the chain ends to be connected as shown in Figure 1.
- Then push the two halves against each other as far as they will go. Make sure no foreign bodies/material are in the way when bringing the connector halves together.

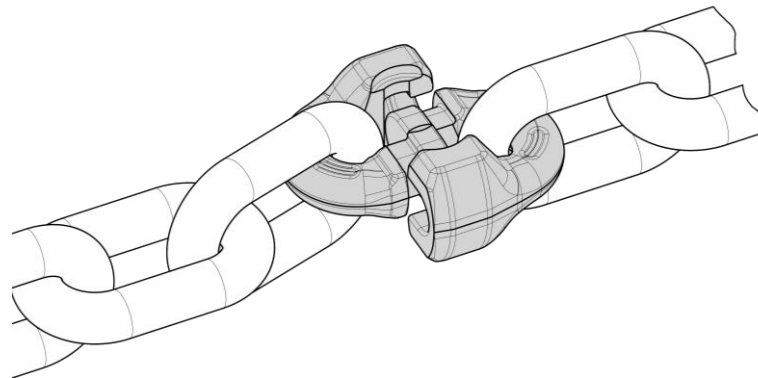
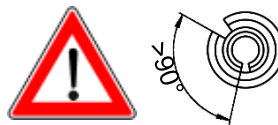


Figure 1

- Move the plug-in module from one side into the center of the connector. Take care that the hole in the plug-in module is in line with the holes in the connector halves.
- Now push in the thicker dowel pin
- Then push in the second smaller dowel pin into the thicker one. Take care that the slots are not in line and both dowel pins do not overlap.



Now clear away tools and other interfering materials from the conveyor before putting it into operation again.

3.3 Disassembly

- Shut down the conveyor and take appropriate measures to rule out it can start inadvertently.
- Slacken the chain to be worked on.
- Use a suitable ejector drift to remove the dowel pins.
- Remove the plug-in module to one side by a hammer.
- Use a hammer to separate the lock halves.

# Changes to previous edition	Mining	
© THIELE GmbH & Co. KG, 2015. All right reserved.		
www.thiele.de	Contact: info@thiele.de	Tel.: + 49 (0) 2371 / 947 0

 THIELE	Single Plane (SP) Connectors TWN 0141	Operating Instructions	
		Article No.	B10134
Name	Norpoth	Change Index	A
		Page 3 of 3	EN-090816

4 Inspections and Maintenance

Check Single Plane Connectors at regular intervals, at least once a month.

In the event of major damage (notches, cracks, corrosion) or if pitch elongation of more than 3 % is encountered replace the chain connectors.

Make sure to exclusively use original THIELE spare parts.

Spare Parts:

Article Numbers of dowel pins:

Connector Size	Thicker Dowel Pin		Smaller Dowel Pin	
	Size [mm]	Article No.	Size [mm]	Article No.
22 x 86	8x80	Z00289	5x80	Z00290
26 x 92	10x90	Z00291	6x90	Z00292
30 x 108	10x100	Z00293	6x100	Z00294
34 x 126	10x115	Z00295	6x100	Z00294
38 x 126	10x120	Z00297	6x100	Z00294
38 x 137	10x120	Z00297	6x110	Z00296
38 x 146	10x120	Z00297	6x120	Z00298

Ejector drifts for the dowel pins are available by Article No. F92201.