



TWN 0119
TWN 0124



TWN 1882

Definitions

Working Load Limit (WLL)

The maximum load, which a lifting point is designed to support.



NOTICE

Read ASME B30.9 for sling inspection criteria.
Read ASME B30.26 "Rigging Hardware",
Chapters 26-0, 26-1, 26-4.



WARNING

The following Operating Instructions must always be followed to avoid the risk of personal injury or property damage.

Do not use a lifting point before reading these Operating Instructions.

2. BASIC SAFETY REQUIREMENTS



WARNING

To prevent the risk of injury never walk or stay under lifted loads!

The Working Load Limit must not be exceeded!

Lifting points as well as lifting and attachment means to be used must be free from defects!

Working under the influence of drugs, medications impairing the sense and/or alcohol is strictly forbidden!

1. ABOUT THIS INSTRUCTION

This Mounting Instructions describes in particular how lifting points, weld type according to TWN 0119, TWN 0124 and TWN 1882 (TWN = THIELE Shop Standard) are to be safely used for lifting purposes.

The instructions apply analogously to components of identical design.

Compliance with these instructions is essential to help avoid hazards and increases the reliability and service life of the lifting points.



DANGER! Indicates a hazardous situation, which, if not avoided, will result in death or serious injury.



WARNING! Indicates a hazardous situation, which, if not avoided, could result in death or serious injury.



CAUTION! Indicates a hazardous situation, which, if not avoided, could result in minor or moderate injury.

NOTICE

NOTICE! Is used to address practices not related to physical injury.

SAFETY INSTRUCTIONS

Safety Instructions signs indicate specific safety-related instructions or procedures.

SAFETY INSTRUCTIONS

- Operators, fitters and maintenance personnel must in particular observe the Operating Instructions of the used sling assembly. The Operating Instructions for the load, if it contains instructions for lifting, must also be observed.
- The specific safety and operating regulations and standards issued locally in the country where the items are used must be observed.
- The directions given in these Mounting Instructions and specified documentations relating to safety, assembly, operation, inspection, and maintenance must be made available to persons operating and using the lifting points.
- These Mounting Instructions must be available in a place near the product during the time the equipment is used. Please contact the manufacturer if replacements are needed. Also see chapter 10.
- During operation work, wear your personal protective equipment!
- **Improper assembly and use may cause personal injury and/or damage to property.**

**SAFETY
INSTRUCTIONS**

- Assembly and removal as well as inspections and maintenance must exclusively be carried out by skilled, qualified, trained and authorized persons only.
- Structural changes are impermissible (e.g. welding, bending).
- **Operators must carry out a visual inspection and, if necessary, a functional test of the safety equipment before each use.**
- Never use worn-out, bent or damaged lifting points.
- Only lift loads that do not exceed the Working Load Limit of the sling chain assembly.
- Do not use force when mounting/positioning the attachment components.
- The load must resist and tolerate the forces to be applied without suffering deformation.
- Only lift loads that are freely movable and not attached or fastened.
- Do not bend the ring.
- Do not start lifting before you have made sure the load has been correctly attached and balanced.
- **No one including you (operator) must be in the way of the moving load (hazard area).**
- During lifting your hands or other body parts must not come into contact with lifting means. Only remove lifting means manually (use your hands).
- Avoid impacts, e.g. due to abruptly lifting loads with chain in slack condition.
- Never move a suspended load over persons.
- Never cause suspended loads to swing.
- Always monitor a suspended load.
- Put the load only down in flat places/sites where it can be safely deposited.
- Assume for sufficient place for the personnel to move when choosing the route of transportation and storage location. Danger to life and risk of injury by crushing hazards!
- In the event of doubts or concerns about the proper and safe use, inspection, maintenance or similar things contact your safety officer or the manufacturer.

THIELE is not responsible for damage caused by non-observance of the instructions, rules, standards and notes indicated!

As regard grade 100, THIELE does not give its approval to the assembly of components sourced from different manufacturers!

As a rule, lifting points are not permitted for the transportation of persons.

3. DESCRIPTION AND INTENDED USE

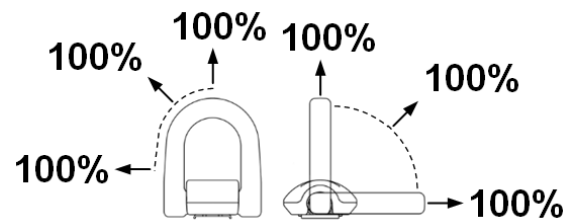
THIELE lifting points weld-type are exclusively intended for attachment to steel structures and components.

Sling chains according to EN 818-4 may be used.

Lifting points weld type mainly consist of a forged weld-on support and a welded or forged ring.

For lifting points of TWN 0124 and TWN 1882 springs are integrated to the weld-on support to provide position stabilization and noise reduction when not in use.

Lifting points can be loaded to 100 % in all tensile directions.



THIELE lifting points meet EG Machinery Directive 2006/42/EG requirements and feature a safety factor of at least 4 based on Working Load Limit.

They are signed with the Working Load Limit in tons or the nominal chain size, manufacturer's mark and traceability code.

THIELE lifting points are designed to withstand 20,000 dynamic load changes under maximum load conditions. In the event of higher loads (e.g. multi-shift/automatic operation) the Working Load Limit must be reduced.

Lifting points must exclusively be used

- within the limits of their permissible Working Load Limit,
- for permissible attachment modes and sling angles,
- within the temperature limits prescribed,
- with properly laid welding seams,
- by trained and authorized persons.

Working Load Limits of different modes of assembly can be seen in the load table.



Using the lifting points of TWN 0119 and TWN 0124 exclusively for lashing the Lashing Capacity is calculated by doubling the Working Load Limit.

An alternating use for lifting and lashing is not allowed.

TWN 1882: There are identically constructed lashing points by TWN 1880 available.

4. COMMISSIONING

Prior to using the components for the first time make sure that

- the lifting points comply with the order and have not been damaged,
- test certificates and Mounting Instructions are at hand,
- markings correspond with what is specified in the documentation,
- inspection deadlines and the qualified persons for examinations are determined,

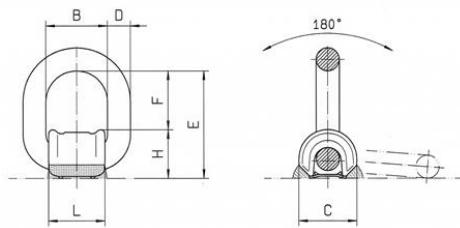
- visibility and functional testings are carried out and documented,
- documentation is safely kept in an orderly manner.

Dispose of the packing in an environmentally compatible way according to local rules.

5. TECHNICAL DATA

Tables include only article numbers of standard and not customized parts.

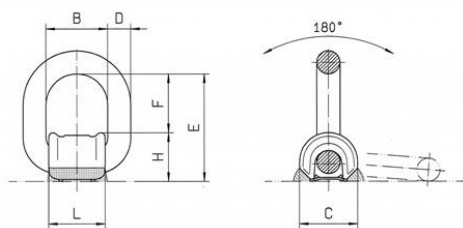
5.1 TWN 0119



Marking (WLL [t])	WLL [lbs.]	Article No.	Dimensions [mm]							Mass [lbs.]
			E ¹⁾	F ¹⁾	C	L	H	D	B	
1	2,500	F35103A	59	31	32	32	28	12	36	0.53
2	4,500	F35113A	69	37	38	38	33	14	42	1.01
3	7,100	F35123A	84	46	45	44	38	18	48	1.39
5	12,000	F35133A	120	69	60	60	51	24	66	4.19
8	18,100	F35143A	127	66	68	65	61	28	72	5.88
15	34,200	F35163A	178	98	96	109	80	39	120	17.83
32	72,300	F35183	292	174	145	165	118	56	180	60.17
50	110,200	F35193	371	228	186	210	145	72	230	132.2

1) for vertical orientation

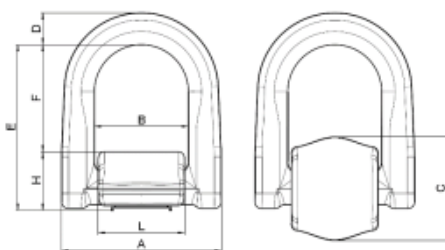
5.2 TWN 0124



Marking (WLL [t])	WLL [lbs.]	Article No.	Dimensions [mm]							Mass [lbs.]
			E ²⁾	F ²⁾	C	L	H	D	B	
1	2,500	F35107	56	30	32	32	28	12	36	0.55
2	4,500	F35110	67	37	38	38	33	14	42	0.95
3	7,100	F35124	81	45	45	44	38	18	48	1.59
5	12,000	F35139	117	69	60	60	51	24	66	4.19
8	18,100	F35144	122	67	68	65	61	28	72	6.17

2) for vertical orientation

5.3 TWN 1882



Marking (WLL [t])	WLL [lbs.]	Article No.	Dimensions [mm]							Mass [lbs.]	
			A	B	C	D	E ³⁾	F	H		L
1,5 t	3,300	F352041	65	38	50	13	68	42	26	35	0.93
2,5 t	5,500	F352051	76	45	50	15	73	46	27	42	1.26
4 t	8,800	F352061	85	50	56	17	87	56	31	46	1.87
6,7 t	15,000	F352071	116	68	78	23	122	78	44	63	4.85
10 t	22,600	F352081	130	69	92	27	126	72	54	63	7.39

3) for vertical orientation

5.4 Load table

Attachment Mode	Sling Angle α	Marking ▶ No. of Legs	TWN 0119 / TWN 0124								TWN 1882				
			1	2	3	5	8	15	32	50	1,5 t	2,5 t	4 t	6,7 t	10 t
Working Load Limit (WLL) of Attachment Mode [lbs.]															
	90°	1	2,500	4,500	7,100	12,000	18,100	34,200	72,300	110,200	3,300	5,500	8,800	15,000	22,600
	90°	2	5,000	9,000	14,200	24,000	36,200	68,400	144,600	220,400	6,600	11,000	17,600	30,000	45,200
	0°	1	2,500	4,500	7,100	12,000	18,100	34,200	72,300	110,200	3,300	5,500	8,800	15,000	22,600
	0°	2	5,000	9,000	14,200	24,000	36,200	68,400	144,600	220,400	6,600	11,000	17,600	30,000	45,200
	30°	2	2,500	4,500	7,100	12,000	18,100	34,200	72,300	110,200	3,300	5,500	8,800	15,000	22,600
	45°	2	3,500	6,400	10,000	17,000	25,600	48,400	102,200	155,800	4,700	7,800	12,400	21,200	32,000
	60°	2	4,300	7,800	12,300	20,800	31,300	59,200	125,200	190,800	5,700	9,500	15,200	26,000	39,100
	asym- metrical	2	2,500	4,500	7,100	12,000	18,100	34,200	72,300	110,200	3,300	5,500	8,800	15,000	22,600
	30°	3 / 4	3,700	6,700	10,600	18,000	27,100	51,300	108,400	165,300	4,900	8,200	13,200	22,500	33,900
	45°	3 / 4	5,300	9,500	15,100	25,500	38,400	72,500	153,400	233,800	7,000	11,700	18,700	31,800	47,900
	60°	3 / 4	6,500	11,700	18,400	31,200	47,000	88,900	187,800	286,300	8,600	14,300	22,900	39,000	58,700
	asym- metrical	3 / 4	2,500	4,500	7,100	12,000	18,100	34,200	72,300	110,200	3,300	5,500	8,800	15,000	22,600

6. MOUNTING

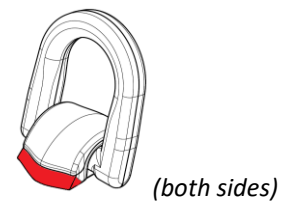
6.1 Preparation

All components to be installed or used must be in perfect condition and the relevant Working Load Limits of all parts must accommodate the respective load to be handled.

The mounting location for each lifting point has to ensure that

- no areas of danger are created (crushing point, shearing point),
- lifting and moving is not restrained by overhang,
- used lifting means (e.g. hooks) are freely movable and will not be bended,
- incorrect use is avoided,
- the load can take the forces including safety factors safely to be applied without suffering deformation,
- lifting points cannot be damaged,
- lifting points can be used easily.

The positions of the welds are marked red in the sketch:



Make sure the welding surfaces are grinded down, flat, dry, free of impurity, flawless and weldable (material see ISO/TR 15608 table 1, group 1).

6.2 Welding Instructions

Welding Instructions relating to weld-on supports (A 633 Gr. or similar) to be attached to SAE1020, A283C, A570Gr40 or similar components.

The following general Welding Instructions shall be duly followed:

Personnel, Quality	ISO 3834 ISO 14731 ISO 9606
Welding Process	In accordance with American Welding Society and/or American Society of Mechanical Engineers requirements.
Further	ISO/TR 15608 SEW 088

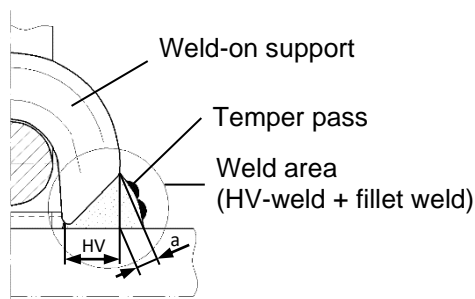
 **WARNING**
Don't weld on the movable rings!

Take care not to widen the gap for the root run during tack-welding.

Take care for an accurate cleaning of the root run.

Take care to avoid end crater.

Continue the welding within one heat.



6.3 Miscellaneous

1. Minimum notched-bar impact strength values of ISO-V specimens KV=27J at -40°F (e.g. S355J4G3 or S355NL)
2. When selecting material grades other than those listed above please contact the base material and filler metal manufacturers for information.
3. The responsible welding supervisor must make sure the welding current is correctly adjusted to suit the given welding position.

Type	Marking (WLL [t])	Minimum Length ¹⁾ [mm]	HV-Weld [mm]	Fillet weld a _{min.} [mm]	Volume appr. [cm ³]
TWN 0119	1	2 x 32	9	3	2.0
	2	2 x 38	9	3	2.3
	3	2 x 44	10.5	3	3.0
	5	2 x 60	15	4	7.3
	8	2 x 65	17	4	8.5
	15	2 x 109	24	6	25.8
	32	2 x 165	36	16	131
TWN 0124	50	2 x 210	36	22	260
	1	2 x 32	9	3	2.0
	2	2 x 38	9	3	2.3
	3	2 x 44	10.5	3	3.0
	5	2 x 60	15	4	7.3
	8	2 x 65	17	4	8.5
	TWN 1882	1,5 t	2 x 35	7.5	3
2,5 t		2 x 42	7.5	3	3.0
4 t		2 x 46	9	3	3.8
6,7 t		2 x 63	12	4	8.1
10 t		2 x 63	15	4	9.8

1) corresponds to length L for both sides of the weld-on support

 **WARNING**
Perform a thorough inspection after welding.
No cracks, notches, inclusions, pitting or undercuts are allowed.

6.4 Welding Processes

Welding Process	Manual Metal Arc Welding (MMA) ISO 9606-1; No. 111					Metal Active Gas Welding (MAG) ISO 9606-1; No. 135		
Welding Groove	ISO 9692-1: chapter 1.9.1 (see sketch)					ISO 9692-1:2013-12, chapter 1.9.1 (see sketch)		
Quality Grade	Root run: ISO 5817 - D Final run: ISO 5817 - C					Root run: ISO 5817 - D Final run: ISO 5817 - C		
Wire Electrode	For example: ISO 2560-A-E42-4-“-“-B (2011) AWS A5.1-04: E7018-1H4R AWS A5.1M-04: E4918-1H4R					ISO 14341-A-G 42- 4- M21- 3Si1 ISO 14341-A-G 46- 4- M21- 3Si2 AWS A5.18-05: ER70S-6 AWS A5.18M-05: ER48S-6		
Welding Position	ISO 6947: PA, PB, PC, PE, PF					ISO 6947: PA, PB, PC, PE, PF		
Preheating of Parent Metal	Thickness ≥ 20 mm: 302 - 392 °F Rebaking (filler metal): appr. 572 - 662 °F for 2 hours					Thickness ≥ 20 mm: 302 - 392 °F		
Interpass Temperature	≤ 752 °F for all heat treatable materials or temperable fine grain materials ≤ 482 °F for thermomechanical fine-grained steels, e.g. S700MC							
Postweld Heat Treatment	Thickness ≥ 30 mm: ≤ 1022 °F for all heat treatable materials or temperable fine grain materials, ≤ 482 °F for thermomechanical fine-grained steels, e.g. S700MC, Tempering for 1 minute per mm of wall thickness or using the 'temper pass' technique							
Pass	Root run	Final run	Final run	Final run	Temper pass	Root run	Final run	Temper pass
Wire or Electrode Diameter	2.5 mm	3.2 mm	4.0 mm	5.0 mm	3.25 mm / 4.0 mm / 5.0 mm	1.0 mm	1.2 mm	1 or 1.2 mm
Welding Current (=)	80 - 110 A	100 - 140 A	130 - 180 A	180 - 230 A	as final run	130 - 260 A	190 - 325 A	190 - 325 A
Electrode Polarity	(= +)	(= +)	(= +)	(= +)	(= +)	(= +)	(= +)	(= +)
Voltage	-	-	-	-	-	22 - 33 V	19 - 31 V	19 - 31 V
Shield Gas ISO 14175; M2 1	-	-	-	-	-	10 - 12 l/min	12 - 14 l/min	12 - 14 l/min
Kind of Passes	Stringer pass	Stringer pass	Stringer pass	Stringer pass	Weaving pass	Stringer pass	Stringer pass	Stringer pass

7. CONDITIONS OF USE

7.1 Normal Use



The ring of the Lifting Point must always be freely movable.

It must not rest on or be supported by other structural parts.

Using 4-leg chain sling assemblies may cause higher risk because only two opposite legs carrying the load. Check the Working Load Limit of lifting points and chain sling assembly carefully and chose if necessary bigger sizes.

7.2 Influence of Temperature



The permissible Working Load Limit of the lifting points reduces at elevated temperatures.

The reduced Working Load Limits shown in the following table shall only apply for short-term use at the temperatures indicated.

	Temperature range	Remaining WLL
TWN 0119 TWN 0124	-40 °C ≤ t ≤ 205 °C -40 °F ≤ t ≤ 400 °F	100 %
	205 °C < t ≤ 300 °C 400 °F < t ≤ 572 °F	90 %
	300 °C < t ≤ 400 °C 572 °F < t ≤ 752 °F	75 %
TWN 1882	-40 °C ≤ t ≤ 205 °C -40 °F ≤ t ≤ 400 °F	100 %



If the lifting points have been exposed to temperatures exceeding the maximum values specified they must not be used furthermore.

7.3 Environmental Influence



Lifting points must not be used in environments where acids, aggressive or corrosive chemicals or their fumes are present. Hot-dip galvanizing or a galvanic treatment is prohibited as well.

7.4 Especially Hazardous Conditions



The degree of danger when used in offshore applications, the lifting of hazardous loads, such as for example liquid metal or similar, risk potentials must be assessed by a competent person in the form of a risk analysis.

Any additional rules and directives must be followed in this case.



For applications in abrasive blasting environments short inspection intervals must be scheduled. Selecting components of the next greater nominal size will increase the permissible wear allowance.

8. INSPECTION, MAINTENANCE, DISPOSAL

8.1 General



Inspections and maintenance must be arranged by the Owner!

Inspection intervals shall be determined by the Owner!

Inspections must be regularly carried out and documented by competent persons, at least once a year or more frequently if the lifting points are in heavy-duty service. After three years at the latest they must additionally be examined for cracks. A load test is not a substitute for this examination.

The results of the inspection shall be kept in a file that has to be set up for each lifting point before first use. The register will show characteristic data as well as identity details.

Immediately stop using lifting points that show the following defects:

- missing or illegible identification/markings,
- deformation, elongation or fractures,
- cuts, notches, cracks, incipient cracks, pinching,
- heating beyond permissible limits,
- restricted hingeability of the ring,
- severe corrosion,
- wear exceeding 10 %, for example in the ring diameter area,
- weld failures.



Cleaning (e.g. prior to inspections) must not take place by using flames or methods that might cause hydrogen embrittlement (e.g. pickling or immersion in acidic solutions).

8.2 Inspection Service

THIELE offers inspection, maintenance and repair services by trained and competent personnel.

8.3 Maintenance



Maintenance and repair work must only be performed by competent and trained persons.



Minor notches and cracks at the rings may be eliminated by careful grinding observing the maximum cross section reduction requirement of 10 % and avoid making more severe cuts or scores.

All maintenance and repair activities must be documented properly.

8.4 Disposal

NOTICE

All components and accessories of steel taken out of service must be scrapped in accordance with local regulations and provisions.

9. STORAGE

Lifting points must to be properly stored in dry conditions at temperatures between 32 °F and 104 °F.

Do not store in a manner that cause mechanical damage.

MOUNTING INSTRUCTIONS

LIFTING POINTS

WELD TYPE



10. THIELE OPERATING AND MOUNTING INSTRUCTIONS

NOTICE

Current mounting and operating instructions are available as a PDF download on the homepage.



11. PUBLISHING INFORMATION

KWS Inc.

P.O. Box 470487, Tulsa, OK 74147, USA

Phone number 800-872-9313

Fax 918-665-4118

Email sales@kwschain.com

Manufacturer:

THIELE GmbH & Co. KG

Werkstraße 3, 58640 Iserlohn, Germany

Phone number +49 2371/947-0

Email info@thiele.de